



We dedicate JB Homes to those who want to relax at the highest level in combination with the latest trends in the world of design. Premium mobile homes are projects characterized by interesting architectural solutions and elegant, representative appearance.

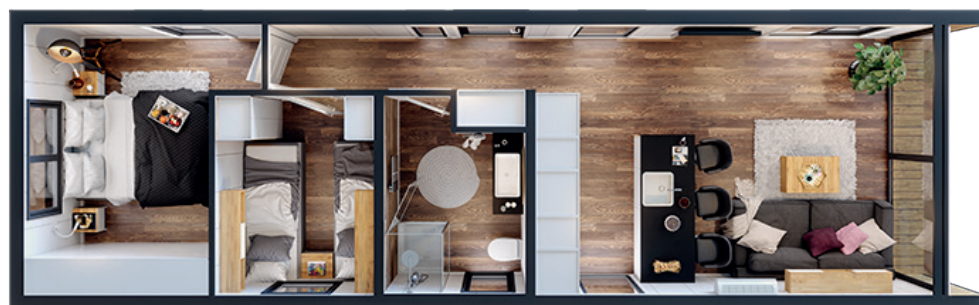
Full equipment and ergonomic arrangement of devices will allow you to move into the home immediately.

PUR foam insulation of 18 cm covering the steel structure in combination with underfloor heating will ensure constant, optimal temperature inside the mobile home.

High-class finishing materials give the interiors a luxurious character. Elegance while practicality of the materials used.

JB SILVER MOON

PREMIUM MOBILE HOME



± 57,2 m²

± 13,3 m

± 4,3 m

Photos are illustrative photos and are not the subject of the offer. Other options available for an additional charge. These dimensions may differ from actual dimensions by ±3 cm.



JB SILVER MOON



External dimensions:	13,3 m x 4,3 m (57,2 m ²)
Weight:	12,5 tons
Height of rooms:	Up to 2,75 m.
External dimensions:	45,71 m ² (living room with kitchen: 20,72 m ² , bathroom: 4,9 m ² , bedroom 1: 5,75 m ² , bedroom 2: 10,12 m ² , hall: 4,22 m ²)
Construction:	Steel completed with wooden substructure based on construction with 6 wheels, including 2 steering wheels (steering axle). Galvanized chassis. Drawbar set with the possibility to transfer from the front to the back of home enabling maneuvering. The model has 8 support points. Set of 8 pieces of steel galvanized support legs included.
Floor:	Steel construction, water-resistant plywood, galvanized steel sheet, PUR open-cell foam 18 cm, wooden substructure, OSB board, vinyl panels.
Roof/ceiling:	Steel construction, wooden substructure, PUR open-cell foam 18 cm, highly vapor-permeable membrane, roof covered with aluminum facade system. The increased ceiling in the whole home, wooden finish, ceiling in the bathroom - Fibo wall system.
External walls:	The elevation is finished with an aluminum facade system. In addition to steel structure elements, there are wooden substructures in the walls, OSB board, insulation of PUR open-cell foam 18 cm, membrane (wind insulation), and vapor barrier foil.
Internal walls	Wooden construction, OSB board, covered with a wide MDF panel and with elements of Fibo wall system in the hall; partition walls soundproofed with mineral wool 5 cm. Walls and ceiling in the bathroom - Fibo wall system.
Doors	Triple-glazed windows, PVC single-sash entrance door 90/200 cm with high-quality finish in veneer outside; MDF white internal doors 70/200 cm.
Windows	7/6 chamber system, profile/80mm, triple-glazed windows with a steel frame, high-quality finishing surface in veneer outside, gable window in a frame of 3,7 x 2,8 m. Dimensions may vary with actual dimensions ±5 cm.
Electric instalations	Main switchboard, 3 phase installation. Electric wires in an additional conduit. Wire to the sockets: 3 x 2,5 mm ² , for lighting 3 x 1,5 mm ² . Electrical sockets, USB socket (x4), antenna socket (x1), Internet (x1), and switches. Outside sockets (x2).
Water and sewage installation	ALU-PEX and PVC pipes in the kitchen and bathroom. The wall-hidden installation led out under the home to the power supply.
Ventilation	Sanitary ventilation, continuous two-stage exhaust ventilation located on the bathroom wall, air intake set with a heater.
Ligtning inside	Indoor lighting: Ceiling lighting – adjustable LED points in each room and additionally linear LED lighting. Outdoor lighting: Directional wall scones and additional waterproof linear LED lightening in the glazed gable wall.
Ligtning outside	Indoor lighting: Ceiling lighting – adjustable LED points in each room and additionally linear LED lighting. Outdoor lighting: Directional wall scones and additional waterproof linear LED lightening in the glazed gable wall.
Heating	Underfloor heating in the entire house (special heating foil adapted to work under the floor panel) cooperating with controllers with Wi-Fi function. Additional electric ribbed heater in the bathroom.
Bathroom	Square corner shower 90 x 90 cm, LED hanging round mirror 80 cm, countertop washbasin, and cabinet with the built-in boiler, hanging toilet bowl. Tabletop made of JPL compact disc.
Kitchen	Kitchen furniture in white gloss, built-in large fridge, telescopic hood, 4-ring induction hob, combined oven with microwave function. Stainless under-mount sink, dishwasher, and washing machine placed on the kitchen island. Kitchen walls and tabletop made of HPL compact disc.
Living Room	Fold-out sofa bed, coffee table, hanging cabinet, a place for TV/antenna socket, air-conditioner.
Bedroom 1	Single beds 80/200 cm with spring mattresses (x2), bedside table (x1), wardrobes with bar, shelves (x2), and hanging cabinets (x2).
Bedroom 2	Double bed 160/200 cm with changeable spring mattress and bedding container, sliding wardrobe (bar, shelves), bedside tables (x2).
Hall	Inset wardrobe (bar, shelves).

Mobile Homes Manufacturer

Letniskowo sp. z o.o.

Ul. Elewatorska 29, 15-620 Białystok

KRS 0001024501, NIP 5423465217, REGON 524717637

www.jbhomes.uk

www.new-static-caravans.uk

export@letniskowo.pl

+48 667 580 099